

# Ava-II PD

Featuring a spacious living room, captivating kitchen, and a welcoming entryway, this home is perfect for entertaining guests, hosting social gatherings, or enjoying a cozy night in with your loved ones. The upstairs

loft opens up to a beautiful party deck, which allows you to continue the festivities outside. The large patio slider doors in the great room and windows in the nook area flood the space with an abundance of natural light. For your own personal retreat, the primary bedroom comes with a spa-like bathroom and walk-in closet.

Whether you're a seasoned entertainer or simply looking for a relaxing retreat, The Ava-II PD plan is the ideal choice for those seeking comfort, and style.

TWO STORY

-----

2,440 SQ FT

4 BEDROOM

2.5 BATH

2 CAR GARAGE

-----

GREAT ROOM

NOOK / STUDY / LOFT

PARTY DECK

COVERED PORCH

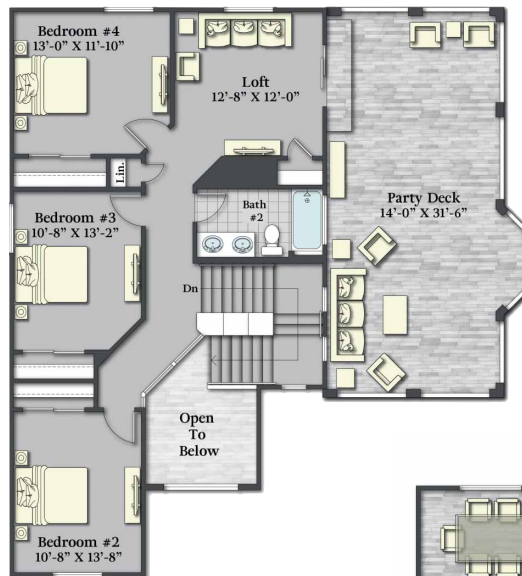
COVERED PATIO

UTILITY ROOM

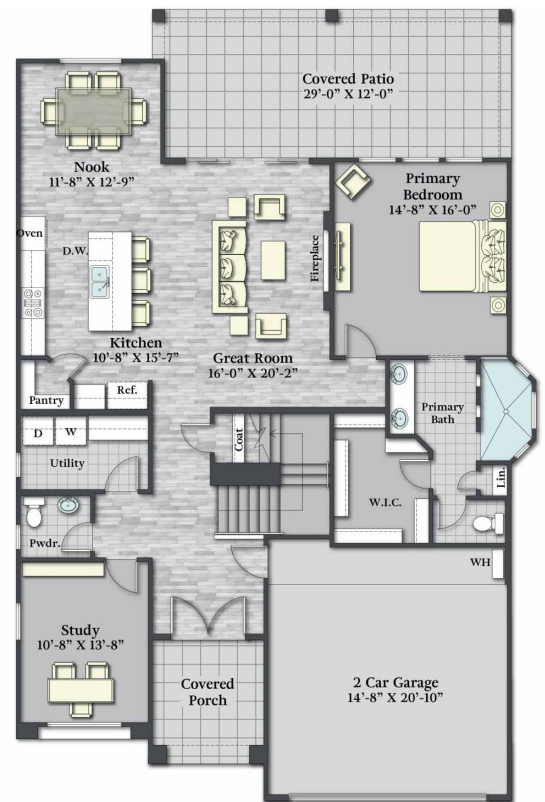
-----

OPTIONAL

BEDROOM 5 ILO STUDY



Opt. Bedroom #5  
ILO Study



1-9-24

[SavannahAHomes.com](http://SavannahAHomes.com)

Savannah A Homes reserves the right to make changes or modifications to any our plans, specifications, materials, features, colors and/or pricing without notice. Square footages are approximate only measured and based on calculations from outside of exterior walls and include interior partition walls.