

Vanessa-I



Experience the epitome of refinement and modern style in Vanessa-I, meticulously designed to match your lifestyle. As you enter through the grand entrance, two spacious bedrooms await you, connected by a hallway bathroom. The great room impresses with its open layout, fireplace, and an enormous gourmet kitchen, equipped with a commodious walk-in pantry and central island. From here, you can take in the scenic dining area. The primary bedroom suite is a showstopper, boasting an expanded primary retreat, where you can unwind in a private haven.

ONE STORY

1,997 SQ FT

3 BEDROOM

2 BATH

2 CAR GARAGE

GREAT ROOM

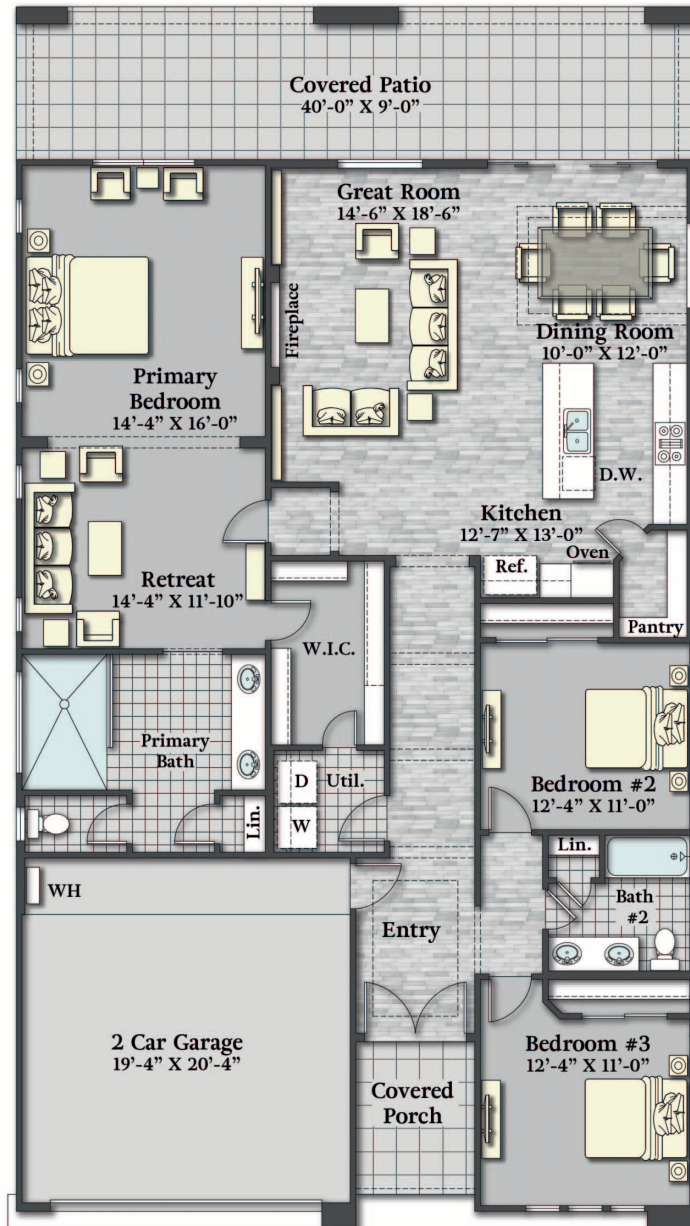
DINING ROOM

PRIMARY RETREAT

COVERED PORCH

COVERED PATIO

UTILITY ROOM



1-2-24



[SavannahAHomes.com](https://www.SavannahAHomes.com)

Savannah A Homes reserves the right to make changes or modifications to any our plans, specifications, materials, features, colors and/or pricing without notice. Square footages are approximate only measured and based on calculations from outside of exterior walls and include interior partition walls.